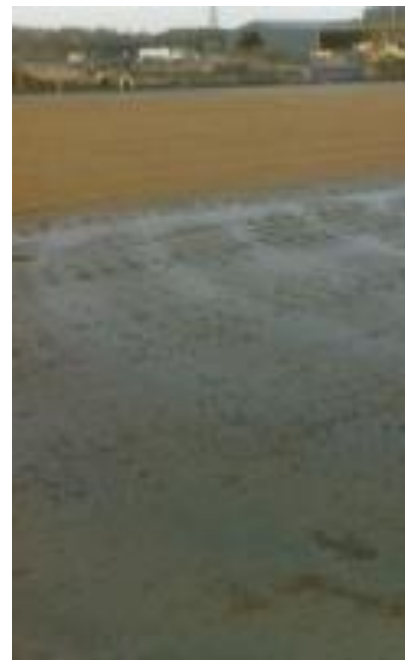




Nestle UK Works, Tutbury, Derbyshire



The Project

Soil stabilisation works as part of the £200 million extension to the Nestle Nescafe factory in Tutbury, Derbyshire. The extension is one of the largest construction projects undertaken by the Nestle Group and the new factory will bring together all of Nestle's UK coffee production including freeze dried, spray dried and pod technology.

TR Stabilisation were called upon by civil engineering contractors O'Brien Contractors to utilise and stabilise the existing site material. The first step was to carry out testing to establish the required mix design for the powder additions.

The site required four different levels of stabilisation. These included:

- Lime modification to the sub-grade with over 22,000sq.m being treated
- Lime modification to the bulk fill with over 8,500 cu.m being treated
- Soil stabilisation incorporating lime and cement to provide a stabilised capping replacement with a CBR of 15%



- Soil stabilisation incorporating lime and cement to provide a Stabilised Capping Replacement with a CBR of 15% to the Building Areas – with over 15,000 sq.m. being treated
- Soil Stabilisation incorporating lime and cement to provide a Stabilised Non-Frost Susceptible Sub-Base Replacement with a CBR of 30% to the External Areas – with over 27,000 sq.m. being treated.

During the works processing 2 different types of powder application/ mixing techniques were used which were:-

- Standard Operation – binder applied to the material using a Tractor Towed Streamaster Spreader and then incorporated using a Wirtgen Standard Mixer. This was used on the majority of the site areas which were not dust sensitive.
- Integrated Operation – binder applied and mixed using the same Wirtgen Integrated dust free machine, which was utilised on areas of the site which were dust sensitive, This works by binder

Nestle UK Works, Tutbury, Derbyshire

- The extension is one of the largest construction projects undertaken by the Nestle Group.
- The site required four different levels of stabilisation.

For more information visit www.trstabilisation.co.uk



The British Cementitious Paving Association

Ref: DS/SS/012
Published: 2014

© Britpave

Published by **Britpave**
Indigo House, Unit 10,
Mulberry Business Park, Fishponds Road,
Wokingham, Berkshire RG41 2GY
United Kingdom
Tel: **+44 (0)118 402 8915**
Email: info@britpave.org.uk
Web: www.britpave.org.uk

All advice or information from Britpave is intended for those who will evaluate the significance and limitations of its content and take responsibility for its use and application. No liability (including that for negligence) for any loss resulting from such advice or information is accepted.

Project details

Client:	Nestle
Project duration:	8 weeks
Main contractor:	John Sisk & Sons
Soil stabilisation contractor:	T R Stabilisation
Area stabilised:	
Soil type:	Sandy/Cohesive
Blend:	
Specialist plant:	Wirtgen Standard & Integrated Mixers